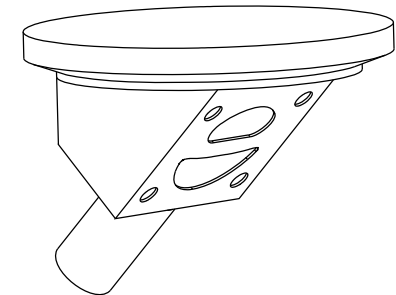
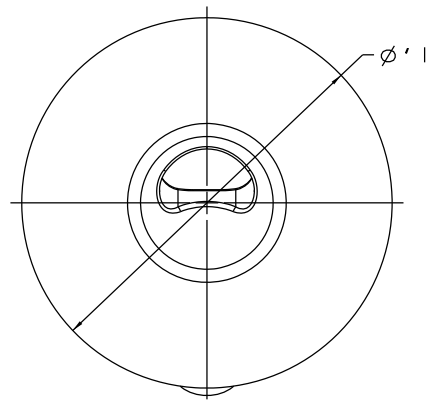
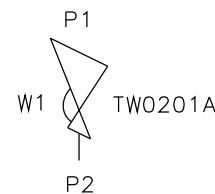


DN80 TANKS ONLY



DN15 TO DN50 TANKS ONLY

BODY SIZE	A	B	øC	øD	E	F	G	H	I	BODY WEIGHT
mm	mm	mm	mm	mm	mm	mm	mm	mm	mm	KGS
DN15 (DN10 END)	75.8	50.8	17.2	14.0	15.0	54.0	83.8	10.6	140.0	1.5
DN15	75.8	50.8	21.3	18.1	15.0	56.2	81.6	13.7	140.0	1.4
DN20	79.8	50.8	26.9	23.7	15.0	57.5	84.6	15.5	140.0	1.7
DN25	85.8	50.8	33.7	29.7	14.5	66.8	92.5	18.9	140.0	2.1
DN40 (DN32 END)	97.3	50.8	42.4	38.4	23.1	64.9	147.0	23.2	200.0	7.4
DN40	97.3	50.8	48.3	44.3	23.1	67.0	144.9	26.2	200.0	7.3
DN50	106.7	50.8	60.3	55.1	22.0	78.0	143.5	32.2	200.0	9.5
DN80 (DN65 END)	130.8	50.8	76.1	70.9	22.7	90.3	174.5	41.1	270.0	23.6
DN80	130.8	50.8	88.9	83.7	22.7	93.5	171.4	45.5	270.0	23.7



ORIENTATION AS PER P&ID DIAGRAM FOR OPTIMUM DRAINABILITY.

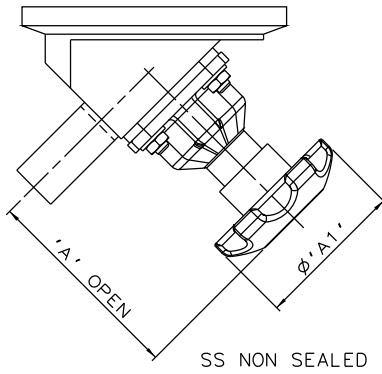
The information on this sheet is Private and Confidential and is the property of Crane Process Flow Technologies Limited and must not be published directly or indirectly in any manner whatsoever without the written permission of the Company and must not be used in any way detrimental to their interests.
© Crane Process Flow Technologies

CRANE Process Flow Technologies
A Crane Co. Company

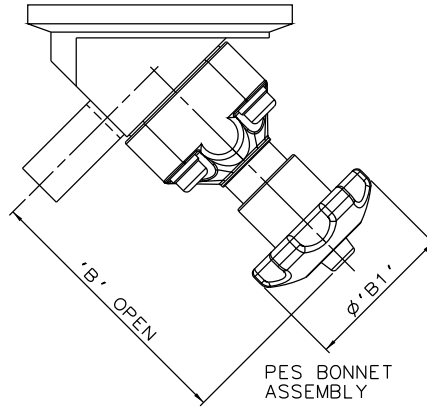
Saunders
The Science Inside

Title
LEADING DIMENSIONS FOR MACHINED FROM SOLID TANK BOTTOM VALVES WITH ISO 1127 S1 BUTT WELD END

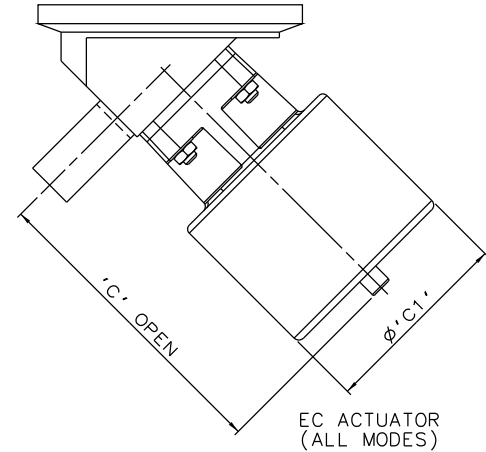
Drawn JRD	Date 20.10.11	UNCONTROLLED IN HARD COPY FORMAT	
Checked RND	Date 11.04.12		
First Angle Projection Method E	DO NOT SCALE	Drawing No. WEB-081	Issue. 2



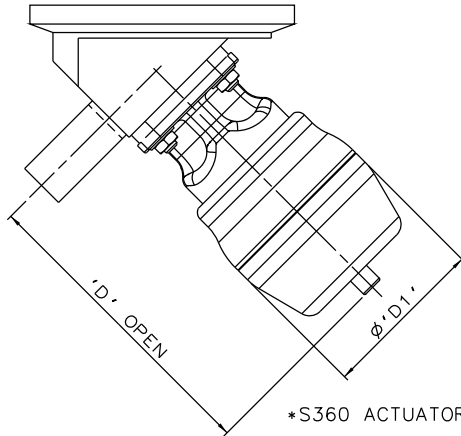
SS NON SEALED



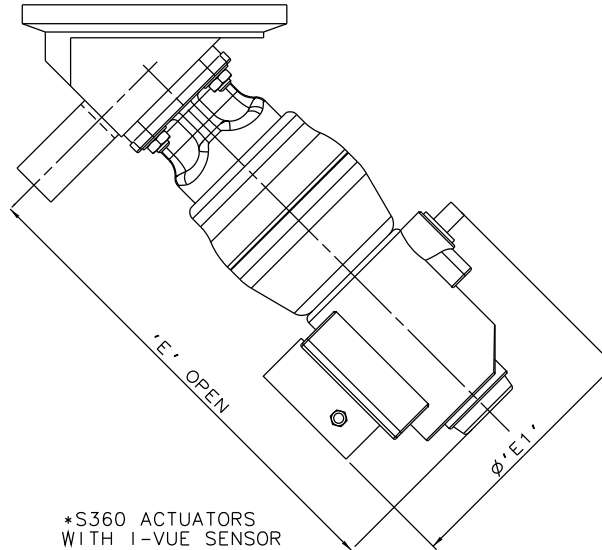
PES BONNET ASSEMBLY



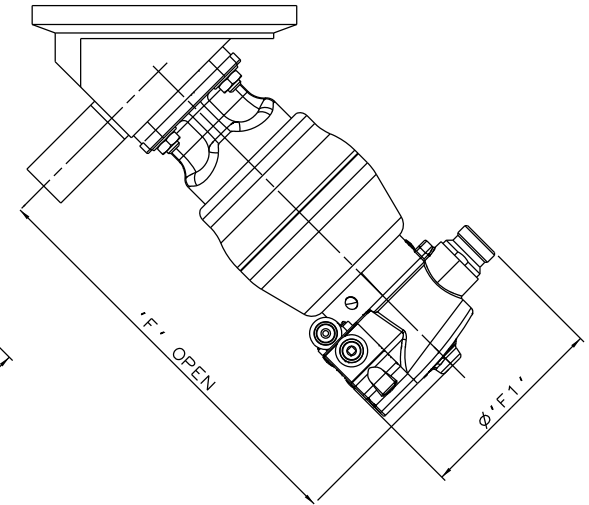
EC ACTUATOR (ALL MODES)



*S360 ACTUATORS



*S360 ACTUATORS WITH I-VUE SENSOR



*S360 ACTUATORS WITH M-VUE SENSOR

* DIMENSIONS SHOW MAXIMUM ENVELOPE FOR ALL MODES

OUTLET SIZE	A		A1		B		B1		C		C1		D		D1		E		E1		F		F1		
	mm	inch	mm	inch	mm	inch	mm	inch	mm	inch	mm	inch	mm	inch	mm	inch	mm	inch	mm	inch	mm	inch	mm	inch	
DN10	0.50	85.6	3.37	62.0	2.44	108.6	4.28	62.0	2.44	112.6	4.43	70.0	2.75	136.6	5.38	67.5	2.66	232.6	9.16	136.0	5.35	196.9	7.75	103.8	4.09
DN15	0.50	88.7	3.49	62.0	2.44	111.7	4.40	62.0	2.44	115.7	4.56	70.0	2.75	139.7	5.50	67.5	2.66	235.7	9.28	136.0	5.35	200.0	7.87	103.8	4.09
DN20	0.75	90.5	3.56	62.0	2.44	116.5	4.59	62.0	2.44	159.5	6.28	103.0	4.05	166.5	6.56	98.0	3.87	262.5	10.33	136.0	5.35	227.5	8.96	103.8	4.09
DN25	1.00	112.9	4.44	80.0	3.15	146.9	5.78	80.0	3.15	166.9	6.57	103.0	4.05	174.9	6.89	98.0	3.87	271.9	10.70	136.0	5.35	235.9	9.29	103.8	4.09
DN32	1.00	159.2	6.27	120.0	4.72	200.2	7.88	140.0	5.51	226.2	8.91	155.0	6.10	225.2	8.87	123.0	4.84	312.2	12.29	136.0	5.35	276.2	10.87	103.8	4.09
DN40	1.50	162.2	6.39	120.0	4.72	203.2	8.00	140.0	5.51	229.2	9.02	155.0	6.10	228.2	8.98	123.0	4.84	315.2	12.41	136.0	5.35	279.2	10.99	103.8	4.09
DN50	2.00	184.2	7.25	120.0	4.72	213.2	8.39	140.0	5.51	248.2	9.77	155.0	6.10	271.2	10.68	150.0	5.92	355.2	13.98	136.0	5.35	319.2	12.57	103.8	4.09
DN65	2.50	252.1	9.93	230.0	9.06	292.1	11.5	250.0	9.84	N/A	N/A	N/A	N/A	400.1	15.75	236.0	9.29	473.1	18.63	136.0	5.35	N/A	N/A	N/A	N/A
DN80	3.00	256.5	10.10	230.0	9.06	296.5	11.67	250.0	9.84	N/A	N/A	N/A	N/A	404.5	15.93	236.0	9.29	477.5	18.80	136.0	5.35	N/A	N/A	N/A	N/A

The information on this sheet is Private and Confidential and is the property of Crane Process Flow Technologies Limited and must not be published directly or indirectly in any manner whatsoever without the written permission of the Company and must not be used in any way detrimental to their interests.

© Crane Process Flow Technologies



Title
LEADING DIMENSIONS FOR MACHINED FROM SOLID TANK BOTTOM VALVES WITH BUTT WELD ISO 1127 S1 TUBE END FITTED WITH TOPWORKS OPTIONS

Drawn	RI	Date	29.06.16	UNCONTROLLED IN HARD COPY FORMAT	
Checked	RND	Date	29.06.16	UNCONTROLLED IN HARD COPY FORMAT	
First Angle Projection Method E		DO NOT SCALE	Drawing No.	WEB-081-ASSY	Issue.
					1